

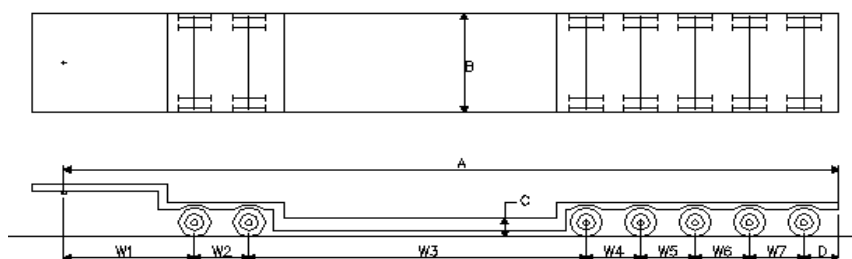


## SERT Special European Registration Trailer

IKS (Individueel Keuren Speciaal)  
 POSTBUS 777 – 2700 AT ZOETERMEER  
 Tel. +31 (0)79 345 8302 – Fax +31 (0)79 345 8034

**SERT DOCUMENT NUMBER :** **SERT 00000 NL**

Make : RDW  
 Type/version : 2011  
 VIN : See Appendix



<b>A</b> Centre of kingpin/towing eye to rear of trailer	min.	15300	max.	19800 (mm)
<b>B</b> Width	min.	2055	max.	3000 (mm)
<b>C</b> Height of loading platform in riding position	min.	550	max.	(mm)
<b>D</b> Overhang rear	min.	800	max.	(mm)

Specific design of loading platform	platform	telescopic (length + width)
Total weight unladen trailer	min.	10000 max. (kg)
King pin		not applicable
King pin D-value		280 (kN)
Towing eye diameter		(mm)
Towing eye D-value		(kN)

### Turning behaviour

Vehicle meets RDW/TET regulation ONTH/N-03NL

### Details :

### Axle data

Axle no	Axles			Tyres			Axle spacing W (mm)		
	(1)	(2)	(3)	Size	LI	(4)	min.	max	
1	P2	PS	H	385/55 R 22,5	160	S	W1	2450	
2	P2	PS	H	385/55 R 22,5	160	S	W2	1310	
3	P2	PS	H	385/55 R 22,5	160	S	W3	5500	10000
4	P2	PS	H	385/55 R 22,5	160	S	W4	1310	
5	P2	PS	H	385/55 R 22,5	160	S	W5	1310	
6	P2	PS	H	385/55 R 22,5	160	S	W6	1310	
7	P2	PS	H	385/55 R 22,5	160	S	W7	1310	
		Code	Explanation				Code	Explanation	
(1) Type		B	Beam axle (continuous or split axle)			(3) Suspension	L	Leafspring	
		P2	Two pendulum axles in 1 axle line (4 wheels in one line)				A	Air	
(2) Steering		R	Rigid				H	Hydraulic	
		ST	Self tracking				U	Unsprung	
		PS	Power steering			(4) Mounting	S	Single mounting	
		PS+M	Power steering + manual steering				D	Dual mounting	

### Technical weights

Weights	Maximum weights (kg) at max indicated speed (km/h)					
	80	60	50	40	30	20
Coupling	18000	19000	20000	21000	22000	23000
Axle 1-7	12000	12250	12500	12750	13000	13250
<b>Total</b>	102000	104750	107500	110250	113000	115750

### Authorization RDW

This document is based on the information as given by the manufacturer or his authorized representative and is valid as long as the corresponding registration certificate(s) is (are) valid and providing that no vehicle modifications have been made that affect the contents of this document.

The data are meant to be used as an indication for applications for abnormal road transports. Acceptance of the maximum values is strictly dependent on the policy in force in the concerning Member State.

Date

The General Director of RDW

on his behalf,

Head of the Department Special Individual Approvals

M. Uttien

i.o.

R. Kors

SERTAF2005E

**RDW****SERT Special European Registration Trailer**

Individueel Keuren Speciaal

POSTBUS 777 – 2700 AT ZOETERMEER

Tel. +31 (0)79 345 8302 – Fax +31 (0)79 345 8034

**Appendix modulair vehicle****Only valid in connection to SERT document number : SERT 00000 NL**

Vehicle consists of the modules below	Identification numbers of permitted parts per module		
Gooseneck/ drawbar	XRA123ZZZ78RDW001		
Adapter			
Axle bogie	XRA123ZZZ78RDW002 XRA123ZZZ78RDW012 XRA123ZZZ78RDW022		
Adapter			
Loading platform 1	XRA123ZZZ78RDW003		
Loading platform 2 optional	XRA123ZZZ78RDW013	6000	Weight (kg)
Loading platform 3 optional	XRA123ZZZ78RDW023	4500	Weight (kg)
Loading platform 4 optional	XRA123ZZZ78RDW033	5500	Weight (kg)
Loading platform 5 optional	XRA123ZZZ78RDW043	3000	Weight (kg)
Loading platform 6 optional			Weight (kg)
Adapter			
Axle bogie	XRA123ZZZ78RDW004 XRA123ZZZ78RDW014		
Turntabel			

**Conditions**

The use of the modular composed vehicle on public roads is only permitted if:

- in the accompanying, valid, permit the applicable SERT document number is denoted;
- for each axle bogie a valid vehicle registration document is present;
- the vehicle is composed according to the SERT drawing (optional parts may be left out)
- each used vehicle module is mentioned in the summary of permitted parts above

Substitutes appendix dd.

**Date :** 19-09-2011

The General Director of RDW  
on his behalf,  
Head of the Department Special Individual Approval  
M. Uttien

i.o.  
R. Kors

SERTAF2005E